

# Mentor SILVA CUP 2025

International Orienteering Event

Enjoy **3** days of

*wild*  
**Orienteering**  
in Romania!

**19 - 21 September 2025**

Curtea de Argeş - Argeş County  
Sprint WRE, 7 Legs Mixed Relay & Middle WRE



XLAB SOLUTIONS



FEDERAȚIA ROMÂNĂ  
DE ORIENTARE



Mentor  
SILVA

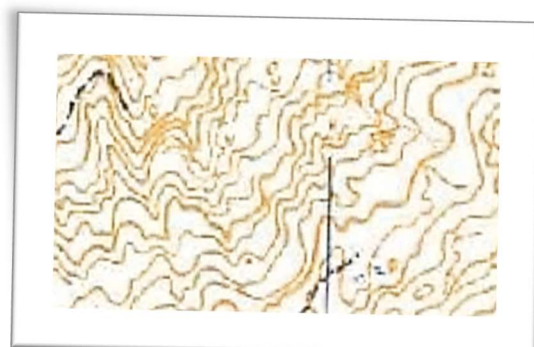
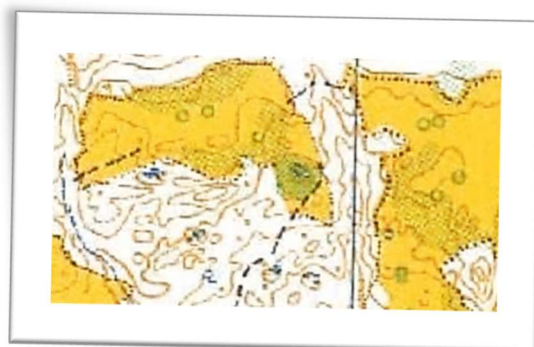
[mentorsilva.ro](http://mentorsilva.ro)

Enjoy 3 spectacular races in  
**Curtea de Argeș, Romania,**  
**19 – 21 September 2025**

## General information

3 Days Event Mentor Silva Cup 2025.

- ▲ **WRE Sprint**
- ▲ **7 Legs Mixed Relay (4<sup>th</sup> edition)**
- ▲ **WRE Middle Distance**



## Organizers

**Main organizer:** Mentor Silva Club Bucharest – <https://mentorsilva.ro>

**Event Manager:** Ciprian POPA

**National controller:** Gabriel MAIORESCU

**I.O.F. Adviser:** Niculina MAIORESCU

## Sponsors and partners:

## Calendar of the event

September, the 19<sup>th</sup> – Sprint - World Ranking Event, National Championship Sprint Stage Event

September, the 20<sup>th</sup> - 7 Legs Mixed Relay

September, the 21<sup>st</sup> – Middle Distance – World Ranking Event

## Preliminary Schedule

Day	Hours	Event	Location
Friday September, the 19 <sup>th</sup>	15:00– 16:30	Registration of participants Distribution of participation kits and sponsors' gifts.	Curtea de Arges
	17:00	Start in Mentor Silva Cup – <b>Sprint WRE, National Championship Sprint Stage</b>	
Saturday September, the 20 <sup>th</sup>	8:00 – 9:00	Registration of participants Distribution of participation kits and sponsors' gifts.	Curtea de Arges - Zigoneni
	10:00	Start in Mentor Silva Cup – <b>7 Legs Mixed Relay</b>	
Sunday September, the 21 <sup>st</sup>	10:00	Start in Mentor Silva Cup – <b>Middle Distance WRE</b>	Curtea de Arges - Zigoneni
	14:00	Prize Giving Ceremony for Sprint, Relay and Middle Distance	

## Terrain and maps

▲ **Sprint** - Urban area with paved alleys, parks, and buildings

▲ **7 Legs Mixed Relay & Middle Distance** – New maps 2024-2025 of beautiful orienteering challenging forest, hilly, with intricate contour details, with areas varying from excellent to quite difficult runnability and visibility.

## Classes and Rules

### ▲ WRE Sprint - National Championship Sprint Stage Event

The classes for Mentor Silva Cup Middle Distance race are:

MW12, MW14, MW16, MW18, MW20, MW21E, MW35, MW40, MW45, MW50, MW55, MW60, MW65, MW70, MW75, MW80, Open, Open Family

### ▲ 7 Legs Mixed Relay

#### Rule no. 1

- Relay teams can be made up of athletes belonging to the same club, as well as to other clubs.

#### Rule no. 2

- Each relay team must include **at least 3 female** athletes.

#### Rule no. 3

- Each relay team will line up 7 athletes, who will run in the order and in the classes mentioned below:

Relay leg	Category	Equivalent
1	Kids 1	M/W 12
2	Masters 2	M/W 55+/W 14 *
3	Kids 2	M/W 16 / M 14 *
4	Juniors	M/W 20
5	Masters 1	M45/W35
6	Elite 2	M35/W21
7	Elite 1	M21

#### Rule no. 4 \*

- Athletes of W14 class are accepted to run the M/W55 leg, being aware of the technical level of the race, specific to this Master class.

#### Rule no. 5 \*

- Athletes of M14 class are accepted to run the M/W16 leg, being aware of the technical level of the race, specific to the 16 years category.
- Athletes of M/W65+ class are accepted to run the M/W55 leg, being aware of the length of the race, specific to the 55 years category.

**To glorify their courage, the organizer will award them a 5-minute bonus!**

## Rule no. 6

- Every relay team must appoint a captain, bearing the following tasks:
  - decides the distribution of athletes in his relay
  - monitors & follows the **Rules of Relay**
  - communicates with the event manager
  - nominates & invokes the “Jolly Joker” of his relay

## Rule no. 7

### “Jolly Joker”

- If the captain decides his relay has lost too much time after the first three legs, he may ask for Early Elite.  
This means that either of **Elite1** or **Elite2** athletes may swap running orders and run the 4th Leg, instead their initial 6th or the 7th Leg.  
Consequently, the Juniors will take the 6th or the 7th Leg only (depending on which of the Elite athlete he’s swapping).
- Masters1 athletes have to keep their running order on the 5th Leg.
- Swapping orders won’t interfere with the courses / classes (i.e. Elite1 will still run their M21 course; Juniors will still run their M/W20 course).

## Rule no. 8

- Captain may invoke the “Jolly Joker”, **only once, during the 3rd Leg** of his relay team.
- Captain’s decision must be communicated to the event manager **before the 3rd Leg runner arrives at the spectators’ control.**

## Rule no. 9\*

- Mass start of the delayed relays is permitted only after the final ranking of the first 6 relays.
- Mass start is permitted only per one class at once.
- Classes will be allowed to start every 5 min.  
**\*subject of event manager’s decision**

## Rule no. 10

- The relay is being officially registered only by nominating all the 7 athletes per Leg.
- Reserves may be nominated only if not part of another relay team.

## ❖ WRE Middle Distance

The classes for Mentor Silva Cup Middle Distance race are:

MW12, MW14, MW16, MW18, MW20, MW21E, MW35, MW40, MW45, MW50, MW55, MW60, MW65, MW70, MW75, MW80, Open, Open Family.

## Entry fees and bonuses

Race	Classes	Until 15 May 2025	Until 15 July 2025	Until 5 September 2025
Sprint	M/W 12, 14, Open, Open Family	3 EUR	4 EUR	4 EUR
	M/W16,18, 65, 70, 75	6 EUR	6 EUR	7 EUR
	M/W 20, 21, 35, 40, 45, 50, 55, 60	8 EUR	8 EUR	9 EUR
Middle Distance	M/W 12, 14, 16	7 EUR	9 EUR	10 EUR
	M/W18, 20, 35, 40, 45, 50, 55, 60, 65, 70, 75, Open, Open Family	10 EUR	14 EUR	16 EUR
	M/W21	12 EUR	16 EUR	18 EUR
Relay	The fee is for the entire 7 athletes relay team.	280 EUR	300 EUR	380 EUR
		<p><b>The relay consisting of 7 members from the same club finishing the race, will receive a bonus of 300 EUR at the end of the race.</b></p> <p><b>The relay team which includes 4 female athletes finishing the race, will receive a bonus of 150 EUR at the end of the race.</b></p> <p><b>The relay team which will line up a Master athlete running the Elite1 (M21) class, will receive a bonus of 150 EUR at the end of the race.</b></p>		

- Registration will be through platform [orienteeringonline.net](http://orienteeringonline.net). If needed, entries can be submitted via our e-mail: [mentor\\_silva@yahoo.co.uk](mailto:mentor_silva@yahoo.co.uk)
- Elite classes – M/W21 should make an additional entry through the IOF Eventor Page for Sprint and Middle Distance races.
- **Entry is not valid until the entry fee is received in the organizer's account. The date of the payment will be considered the date of entry.** If registration is cancelled before the last deadline, 80% of the paid fee will be reimbursed. If registration is cancelled after the last deadline, 50 % of the paid fee will be reimbursed. Changes in names, SI card/category are accepted until 14 September. After this date, changes are possible only if there are vacant places available in the start list.

- All fees have to be paid either in EURO, or in Romanian currency (RON), in advance, to bank account, until the deadline for entries.
- No entries will be accepted for Relay after the last deadline. For Sprint and Middle Distance later entries may be accepted if vacant positions in the start list are available.
- Invoice shall be sent by email 3 days after the payment has been registered.

### Banking details

Asociatia Club Sportiv Mentor Silva

Adress: Calea Mosilor 310, Bl.58BIS, Ap. 32, Sector 2, Bucharest

- For **EUR** payments:  
IBAN: RO85 BTRL EURC RTOP 8968 1701
- For **RON** payments:  
IBAN: RO03 BTRL RONC RTOP 8968 1701

## Ceremonies and awards

Prize Giving Ceremony will be held on 21<sup>st</sup> of September, starting 13:00. The stages will be awarded separately, thus:

### ❖ 7 Legs Mixed Relay

**1<sup>st</sup> place – 3300 EUR** + entry fee paid for the future edition of Mentor Silva Cup for sprint and middle distance, for the participants running Kids 1, Kids 2 and Juniors.

**2<sup>nd</sup> place – 1950 EUR** + entry fee paid for the future edition of Mentor Silva Cup for sprint and middle distance, for the participants running Kids 1 and Kids 2.

**3<sup>rd</sup> place – 1350 EUR** + entry fee paid for the future edition of Mentor Silva Cup for sprint and middle distance for the participants running Kids1.

### ❖ WRE - Middle Distance and Sprint

The first three places for all categories will receive medals and small prizes. The first 6 places of W/M21 WRE will be awarded separately.

### More to see at the venue and in the surroundings of the event, in Argeş

- **Curtea de Argeş, medieval royal seat of Wallachia Country** – part of Romania and famous royal orthodox cathedral where Romanian kings rest along centuries, including Queen Mary of Romania.
- **Vidraru Lake** in beautiful Fagaras Mountains, the highest in Romania.
- **Transfagarasan Road**, according to Trip Advisor, citing the reviews made by Top Gear, “the most beautiful road in the world”.

- **Poienari Fortress of Vlad Tepes (Dracula)** is situated in Poienari, 25 km away from Curtea de Arges, on the way to crossing Fagaras Mountains on Transfagarasan Road and Vidraru Lake. It is a fearsome medieval fortress used by Vlad Tepes for defence against the Ottomans. It takes 1480 stairs to climb to it, so...

