

Mentor SILVA CUP 2025

International Orienteering Event

Enjoy **3** days of

wild
Orienteering
in Romania!

19 - 21 September 2025

Curtea de Argeş - Argeş County
Sprint WRE, 7 Legs Mixed Relay & Middle WRE



XLAB SOLUTIONS



FEDERAȚIA ROMÂNĂ
DE ORIENTARE



Mentor
SILVA

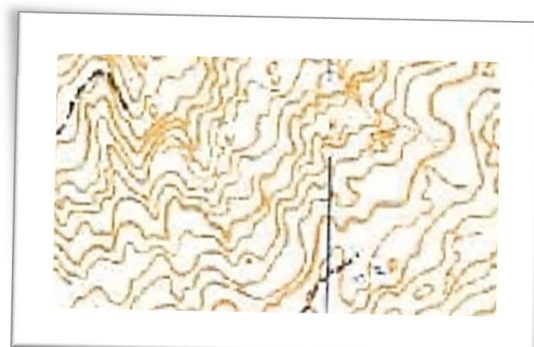
mentorsilva.ro

Enjoy 3 spectacular races in
Curtea de Argeș, Romania,
19 – 21 September 2025

General information

3 Days Event Mentor Silva Cup 2025.

- ▲ WRE Sprint
- ▲ 7 Legs Mixed Relay (4th edition)
- ▲ WRE Middle Distance



Organizers

Main organizer: Mentor Silva Club Bucharest – <https://mentorsilva.ro>

Event Manager: Ciprian POPA

National controller: Gabriel MAIORESCU

I.O.F. Adviser: Niculina MAIORESCU

Sponsors and partners:

Buletin 2

Calendar of the event

September, the 19th – Sprint - World Ranking Event, National Championship Sprint Stage Event

September, the 20th - 7 Legs Mixed Relay

September, the 21st – Middle Distance – World Ranking Event

Preliminary Schedule

Day	Hours	Event	Location
Friday September, the 19 th	15:00– 16:30	Registration of participants Distribution of participation kits and sponsors' gifts.	Curtea de Arges
	17:00	Start in Mentor Silva Cup – Sprint WRE, National Championship Sprint Stage	
Saturday September, the 20 th	8:00 – 9:00	Registration of participants Distribution of participation kits and sponsors' gifts.	Curtea de Arges - Zigoneni
	10:00	Start in Mentor Silva Cup – 7 Legs Mixed Relay	
Sunday September, the 21 st	10:00	Start in Mentor Silva Cup – Middle Distance WRE	Curtea de Arges - Zigoneni
	14:00	Prize Giving Ceremony for Sprint, Relay and Middle Distance	

Terrain and maps

 **Sprint** - Urban area with paved alleys, parks, and buildings

▲ **7 Legs Mixed Relay & Middle Distance** – New maps 2024-2025 of beautiful orienteering challenging forest, hilly, with intricate contour details, with areas varying from excellent to quite difficult runnability and visibility.

Classes and Rules

▲ WRE Sprint - National Championship Sprint Stage Event

The classes for Mentor Silva Cup Middle Distance race are:

MW12, MW14, MW16, MW18, MW20, MW21E, MW35, MW40, MW45, MW50, MW55, MW60, MW65, MW70, MW75, MW80, Open, Open Family

▲ 7 Legs Mixed Relay

Rule no. 1

- Relay teams can be made up of athletes belonging to the same club, as well as to other clubs.

Rule no. 2

- Each relay team must include **at least 3 female** athletes.

Rule no. 3

- Each relay team will line up 7 athletes, who will run in the classes mentioned below:

Relay leg	Category	Equivalent
1	Elite 2	M35/W21
2	Kids 1	M/W 12
3	Masters 2	M/W 55+/W 14 *
4	Kids 2	M/W 16 / M 14 *
5	Juniors	M/W 20
6	Masters 1	M45/W35
7	Elite 1	M21

Rule no. 4 *

- Athletes of W14 class are accepted to run the M/W55 leg, being aware of the technical level of the race, specific to this Master class.

Rule no. 5 *

- Athletes of M14 class are accepted to run the M/W16 leg, being aware of the technical level of the race, specific to the 16 years category.
- Athletes of M/W65+ class are accepted to run the M/W55 leg, being aware of the length of the race, specific to the 55 years category.

To glorify their courage, the organizer will award them a 5-minute bonus!

Rule no. 6

- Every relay team must appoint a captain, bearing the following tasks:
 - decides the distribution of athletes in his relay
 - monitors & follows the **Rules of Relay**
 - communicates with the event manager
 - nominates & invokes the “Jolly Joker” of his relay

Rule no. 7

“Jolly Joker”

- The order of the relay legs is the one indicated above.
- However, if the captain decides that his/her relay has lost too much time after the first two legs – the team is more than 20 minutes behind the leader at the spectator control – he/she may ask for the “**Jolly Joker**” swap, meaning that the remaining 5 legs may run in whatever order the captain chooses.
- Swapping orders won’t interfere with the courses / classes (i.e. Elite1 will still run their M21 course; Juniors will still run their M/W20 course).
- However, it’s each runner’s responsibility to pick up the correct map

Rule no. 8

- Captain’s decision must be communicated to the event manager **before the 2nd Leg runner arrives at the spectators’ control.**

Rule no. 9*

- Mass start of the delayed relays is permitted only after the final ranking of the first 6 relays.
- Mass start is permitted only per one class at once.
- Classes will be allowed to start every 5 min.
*subject of event manager’s decision

Rule no. 10

- The relay is being officially registered only by nominating all the 7 athletes per Leg.
- Reserves may be nominated only if not part of another relay team.

❖ WRE Middle Distance

The classes for Mentor Silva Cup Middle Distance race are:

MW12, MW14, MW16, MW18, MW20, MW21E, MW35, MW40, MW45, MW50, MW55, MW60, MW65, MW70, MW75, MW80, Open, Open Family.

Entry fees and bonuses

Race	Classes	Until 15 May 2025	Until 15 July 2025	Until 5 September 2025
Sprint	M/W 12, 14, Open, Open Family	3 EUR	4 EUR	4 EUR
	M/W16,18, 65, 70, 75	6 EUR	6 EUR	7 EUR
	M/W 20, 21, 35, 40, 45, 50, 55, 60	8 EUR	8 EUR	9 EUR
Middle Distance	M/W 12, 14, 16	7 EUR	9 EUR	10 EUR
	M/W18, 20, 35, 40, 45, 50, 55, 60, 65, 70, 75, Open, Open Family	10 EUR	14 EUR	16 EUR
	M/W21	12 EUR	16 EUR	18 EUR
Relay	The fee is for the entire 7 athletes relay team.	280 EUR	300 EUR	380 EUR
		<p>The relay consisting of 7 members from the same club finishing the race, will receive a bonus of 300 EUR at the end of the race.</p> <p>The relay team which includes 4 female athletes finishing the race, will receive a bonus of 150 EUR at the end of the race.</p> <p>The relay team which will line up a Master athlete running the Elite1 (M21) class, will receive a bonus of 150 EUR at the end of the race.</p>		

- Registration will be through platform orienteeingonline.net. If needed, entries can be submitted via our e-mail: mentor_silva@yahoo.co.uk
- Elite classes – M/W21 should make an additional entry through the IOF Eventor Page for Sprint and Middle Distance races.
- **Entry is not valid until the entry fee is received in the organizer's account. The date of the payment will be considered the date of entry.** If registration is cancelled before the last deadline, 80% of the paid fee will be reimbursed. If registration is cancelled after the last deadline, 50 % of the paid fee will be reimbursed. Changes in names, SI card/category are accepted until 14 September. After this date, changes are possible only if there are vacant places available in the start list.
- All fees have to be paid either in EURO, or in Romanian currency (RON), in advance, to bank account, until the deadline for entries.
- No entries will be accepted for Relay after the last deadline. For Sprint and Middle Distance later entries may be accepted if vacant positions in the start list are available.
- Invoice shall be sent by email 3 days after the payment has been registered.

Banking details

Asociatia Club Sportiv Mentor Silva

Adress: Calea Mosilor 310, Bl.58BIS, Ap. 32, Sector 2, Bucharest

- For EUR payments:
IBAN: RO85 BTRL EURC RTOP 8968 1701
- For RON payments:
IBAN: RO03 BTRL RONC RTOP 8968 1701

Ceremonies and awards

Prize Giving Ceremony will be held on 21st of September, starting 13:00. The stages will be awarded separately, thus:

❖ 7 Legs Mixed Relay

1st place – 3300 EUR + entry fee paid for the future edition of Mentor Silva Cup for sprint and middle distance, for the participants running Kids 1, Kids 2 and Juniors.

2nd place – 1950 EUR + entry fee paid for the future edition of Mentor Silva Cup for sprint and middle distance, for the participants running Kids 1 and Kids 2.

3rd place – 1350 EUR + entry fee paid for the future edition of Mentor Silva Cup for sprint and middle distance for the participants running Kids1.

❖ WRE - Middle Distance and Sprint

The first three places for all categories will receive medals and small prizes. The first 6 places of W/M21 WRE will be awarded separately.

More to see at the venue and in the surroundings of the event, in Argeş

- **Curtea de Argeş, medieval royal seat of Wallachia Country** – part of Romania and famous royal orthodox cathedral where Romanian kings rest along centuries, including Queen Mary of Romania.
- **Vidraru Lake** in beautiful Fagaras Mountains, the highest in Romania.
- **Transfagarasan Road**, according to Trip Advisor, citing the reviews made by Top Gear, “the most beautiful road in the world”.
- **Poienari Fortress of Vlad Tepes (Dracula)** is situated in Poienari, 25 km away from Curtea de Argeş, on the way to crossing Fagaras Mountains on Transfagarasan Road and Vidraru Lake. It is a fearsome medieval fortress used by Vlad Tepes for defence against the Otomans. It takes 1480 stairs to climb to it, so...

